

Antai Global Summer School

Business and Culture In China

Shanghai, China
July 2 - July 20, 2012
Full-Time Study Program



Antai College of Economics & Management
Shanghai Jiao Tong University



ANTAI GLOBAL SUMMER SHCOOL - Business and Culture in China

Shanghai, China; July 2 - July20; Full-Time Study Program



A Photograph about Xujiahui Campus of Shanghai Jiao Tong University

STUDY AT ONE OF CHINA'S TOP BUSINESS SCHOOLS

Antai College is widely considered one of the top Chinese Business Schools and is the only school in Mainland China that has earned AACSB, EQUIS and AMBA accreditation. With an increasingly international faculty and student body, Antai College is familiar with the needs of Western and Chinese business schools, alike. Due to its high degree of national prestige, the College is able to arrange visits to exclusive companies and locations.

Antai College is proud to present the Antai Global Summer School for Business and Culture in China. This program provides exceptional juniors, seniors, and recent college graduates with the opportunity to learn in an innovative environment, under the guidance of Antai's world-renowned faculty. Working in teams, participants hone their leadership skills while building a diverse network of talented peers from around the world. Antai Global Summer School is especially suited for those who are ready to experience Chinese culture and business.



PROGRAM DESIGN

The Summer School program gives participants time to study outside of classroom hours, but also allows time for sightseeing and exploring the region.

A Quality Faculty

The summer course is taught by both highly-qualified, experienced faculty from Antai College and by visiting professors and outside specialists. All classes are taught in English.

Teaching Methods

Instruction includes lectures, case study discussions, team activities, company visits and social events.

Evaluation

Students' cumulative evaluations are based on classroom participation, short tests, oral reports, written exams and project work.

Course Composition

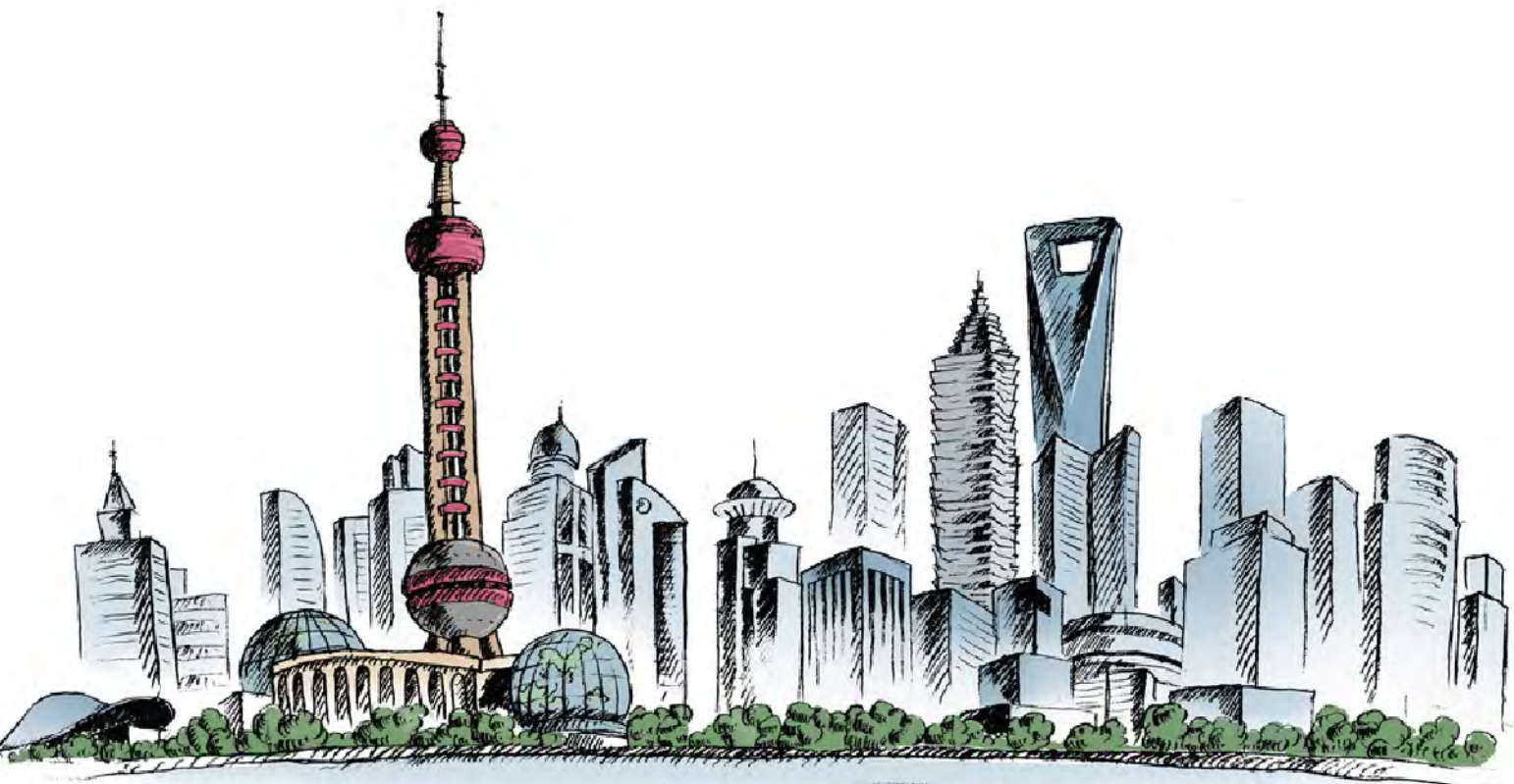
Sessions	Hours	Antai Credits	ECTS Credits
Academic Sessions	36	2	6
Guest Executives	6	1	3
Company Visits	18		
Team Activities	6		
Total	66	3	9

Class Schedule

Week 1	July 2(Mon)	July 3(Tue)	July 4(Wed)	July 5(Thu)	July 6(Fri)
9:00 a.m.-12:00 p.m.	Orientation & Culture Experience	Academic Session 2	Guest Executive	Company Visits	Day Off
1:30 p.m.-4:30 p.m.	Academic Session 1	Academic Session 3	Team Activities	Company Visits	
6:30 p.m.-9:00 p.m.			Social Event		
Week 2	July 9(Mon)	July 10(Tue)	July 11(Wed)	July 12(Thu)	July 13(Fri)
9:00 a.m.-12:00 p.m.	Academic Session 4	Guest Executive	Company Visits	Academic Session 7	Day Off
1:30 p.m.-4:30 p.m.	Academic Session 5	Academic Session 6	Company Visits	Academic Session 8	
6:30 p.m.-9:00 p.m.				Social Event	
Week 3	July 16(Mon)	July 17(Tue)	July 18(Wed)	July 19(Thu)	July 20(Fri)
9:00 a.m.-12:00 p.m.	Academic Session 9	Guest Executive	Company Visits	Academic Session 11	Academic Session 12
1:30 p.m.-4:30 p.m.	Case Study	Academic Session 10	Company Visits	Team Activities	Certificate Awarding Ceremony
6:30 p.m.-9:00 p.m.		Social Event			

[Note] Schedules are subject to minor changes

Join Students from All over the world in Shanghai, for a truly exciting experience





CERTIFICATE & CREDITS

3-week program, 9 ECTS credits, 3 Antai credits
 Students who successfully complete the three-week course are awarded an Antai Global Summer School Certificate. Academic transcripts listing the grades and credits received are given to every participant.

A FULL RANGE OF SERVICES

Students will be provided guidance and assistance by Antai's International Cooperation & Exchange Office. Comprehensive information on accommodations, arrival, campus facilities and schedules can be found on our website.

Summer Institute participants have free access to all campus facilities including:

- Classrooms with free wifi internet access
- Library facilities
- Administrative assistance
- Student Cafeteria
- Sport facilities

WHO SHOULD APPLY

Although the course is ideally suited for MSc and recent MBA students in good standing studying business administration, it is open to all business school students and has a broad range of applicability for a number of specializations.

HOW TO APPLY

The 2012 application form can be found exclusively online at http://www.acem.sjtu.edu.cn/en/intl/summer_school.jsp starting December 10, 2011. Rolling admissions begin in December 2011. There is an application fee of \$50.

Cost and Fees:

Sessions	Exchange-based	Nonexchange-based
Tuition	-	\$2,700
Accommodation & Activity Fees	\$800	\$800
Company Visits	\$50	\$50
Total	\$850	\$3,550

[Note] Application and activity fees are nonrefundable

ANTAI GLOBAL SUMMER SHCOOL - Business and Culture in China

Shanghai, China; July 2 - July20; Full-Time Study Program



Fees include:

- All in-class teaching and course materials
- Lunches during school day
- Accommodations
- All field trips and event fees and an official Antai transcript

Estimates of Other Fees:

- Meals:\$6-\$10 per meal
- Transportation:\$1-\$2 per ride

Application Deadline

Rolling Admissions; spaces are limited.

Applicants are strongly encouraged to submit all materials as early as possible. The final application deadline is May 5, 2012.

If you wish to receive further information about the Antai Global Summer School 2012 and the application form, please visit our website: http://www.acem.sjtu.edu.cn/en/intl/summer_school.jsp or contact us at the following address:

ANTAI GLOBAL SUMMER SCHOOL - Business and Culture in China

Ms. Julia WANG

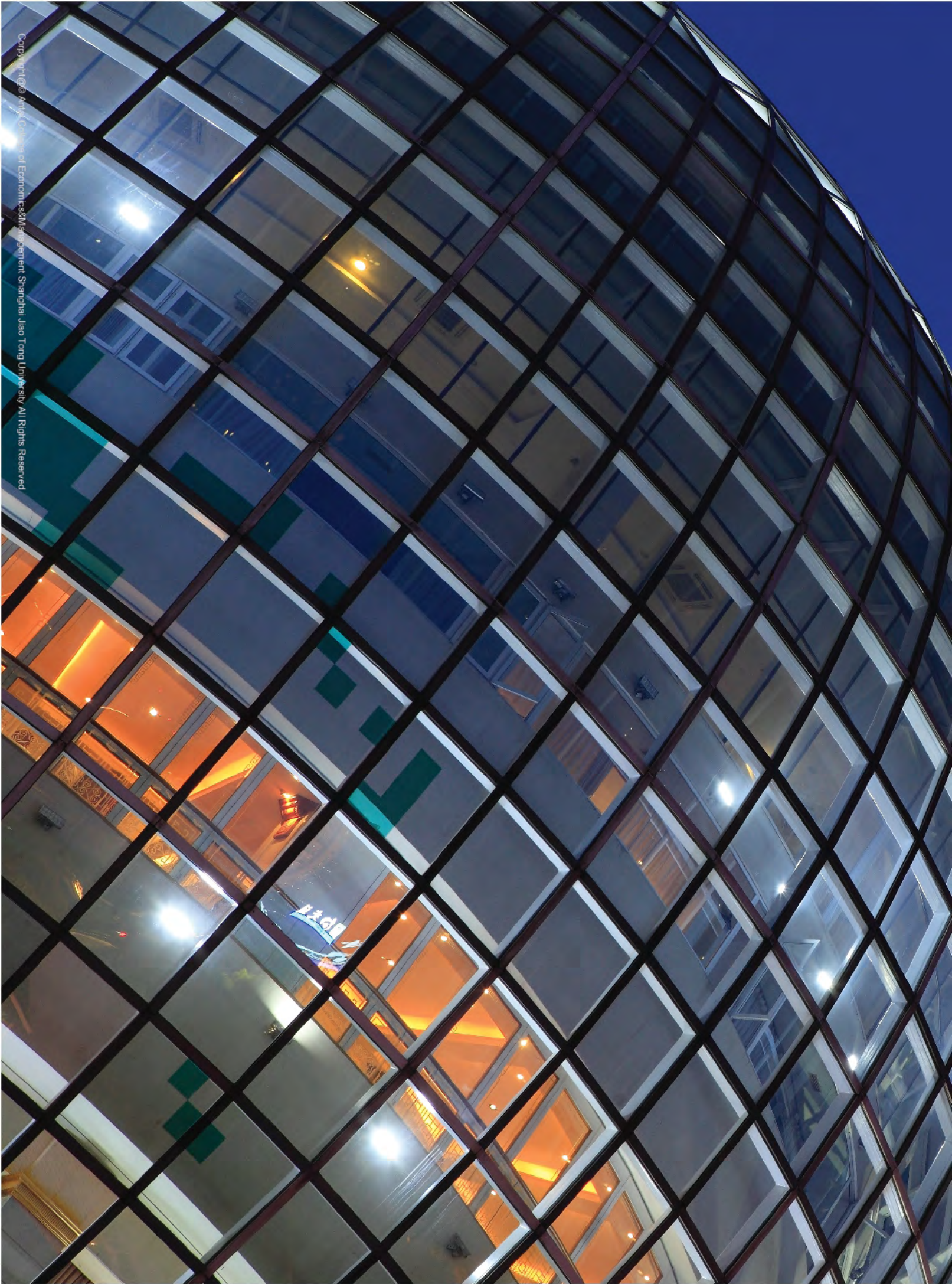
Senior Manager in International Development

Phone: +86 21 5230 2510

Fax: +86 21 5230 2511

E-mail: wliye@sjtu.edu.cn





Copyright © Anhui College of Economics & Management, Shanghai Jiao Tong University. All Rights Reserved

Contact : International Cooperation and Exchange Office

Tel: +86-21-52302510 Fax: +86-21-52302511

Email: ICEO@sjtu.edu.cn

Address: Fahua Zhen Road 535, Shanghai 200052
www.acem.sjtu.edu.cn