



# Antai Global Summer School

*Business and Culture  
In China*

Shanghai, China  
July 1 - July 19, 2013  
Full-time Study Program  
(Undergraduate/Master Track)

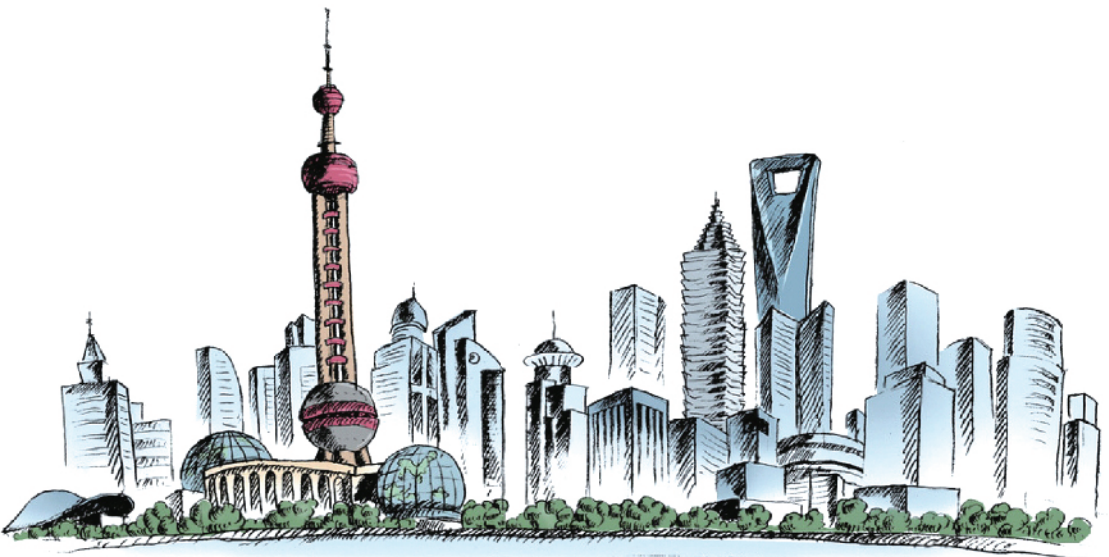


Antai College of Economics & Management  
Shanghai Jiao Tong University



**ANTAI GLOBAL SUMMER SCHOOL**  
**Business and Culture in China**  
Shanghai, China; July1 - July19; Full-time

“Learn about **China**  
and differentiate  
yourself from  
the crowd.  
Make the **best**  
of your **summer**  
with **Antai** Global  
Summer School!”





## Business and Culture in China

Widely regarded as one of China's top Business Schools, Antai College is proud to present to you the Antai Global Summer School with Undergraduate and Master Track. This intensive program is designed to distinguish you from the crowd by providing you with:

- Inspirational academic sessions featuring highly-qualified faculty and world-renowned specialists
- Opportunities to build an extensive network of talented peers and professionals from all over the world
- Exclusive visits to leading companies in various industries
- Challenging but rewarding team activities to hone your leadership skills and communication abilities
- Social events characterized by Chinese culture and excursions to famous landmarks in one of the most rigorous cities in the world

### Program Cost:

**Tuition fees will be waived for exchanged-based students from partner schools:**

Tuition: US\$ 2,700

Accommodation & activities: US\$ 1,200

Application fee: US\$ 50

*Application deadline: May 15, 2013*

## Who should apply?

The Summer School program is open to juniors, seniors, and recent college graduates who are interested in business and management. Our innovative teaching methods and international learning environment will help you to expand your knowledge and life experience in the three-week program. Antai Global Summer School is the right choice for you if you would like to:

- Develop a solid foundation in business and management thinking
- Explore different perspectives on your field of study
- Work effectively with people of diverse backgrounds
- Acquire a first-hand understanding of Chinese culture
- Return home with a brand new vision

## Course Structure:

- 3-week program
- Academic credits (9 ECTS) for the successful completion of the program
- Challenging case study discussion and lectures by leading experts in their fields
- Chinese language training integrated

Sessions	Hours	Antai Credits	ECTS Credits
Academic Sessions	30	2	6
Corporate Seminar	6	1	3
Company Visits	9		
Team Activities	4		
<b>Total</b>	<b>49</b>	<b>3</b>	<b>9</b>



## Class Schedule

WEEK 1				
Monday 01	Tuesday 02	Wednesday 03	Thursday 04	Friday 05
9:00-12:00	9:00-12:00	9:00-12:00	9:00-12:00	9:00-16:30
Orientation Session	Academic Session 1	Corporate Seminar	Company Visit	Sightseeing
13:30-16:30	13:30-16:30	13:30-16:30	13:30-16:30	
Campus Tour	Academic Session 2	Team Activities	Company Visit	
18:30-21:00		18:30-21:00		
Welcome Dinner		Social Event		
WEEK 2				
Monday 08	Tuesday 09	Wednesday 10	Thursday 11	Friday 12
9:00-12:00	9:00-12:00	9:00-12:00	9:00-12:00	Day Off
Academic Session 3	Corporate Seminar	Company Visit	Academic Session 6	
13:30-16:30	13:30-16:30	13:30-16:30	13:30-16:30	
Academic Session 4	Academic Session 5	Company Visit	Academic Session 7	
			18:30-21:00 Social Event	
WEEK 3				
Monday 15	Tuesday 16	Wednesday 17	Thursday 18	Friday 19
9:00-12:00	9:00-12:00	9:00-12:00	9:00-12:00	9:00-12:00
Academic Session 8	Corporate Seminar	Company Visit	Academic Session 10	Evaluation (Final Report)
13:30-16:30	13:30-16:30	13:30-16:30	13:30-16:30	13:30-16:30
Case Study	Academic Session 9	Company Visit	Team Activities	Certificate Awarding
	18:30-21:00 Social Event			18:30-21:00 Graduation Dinner
*Please note that schedules are subject to minor changes				



# ANTAI GLOBAL SUMMER SCHOOL

## Business and Culture in China

Shanghai, China; July1 - July19; Full-time

### HOW TO APPLY

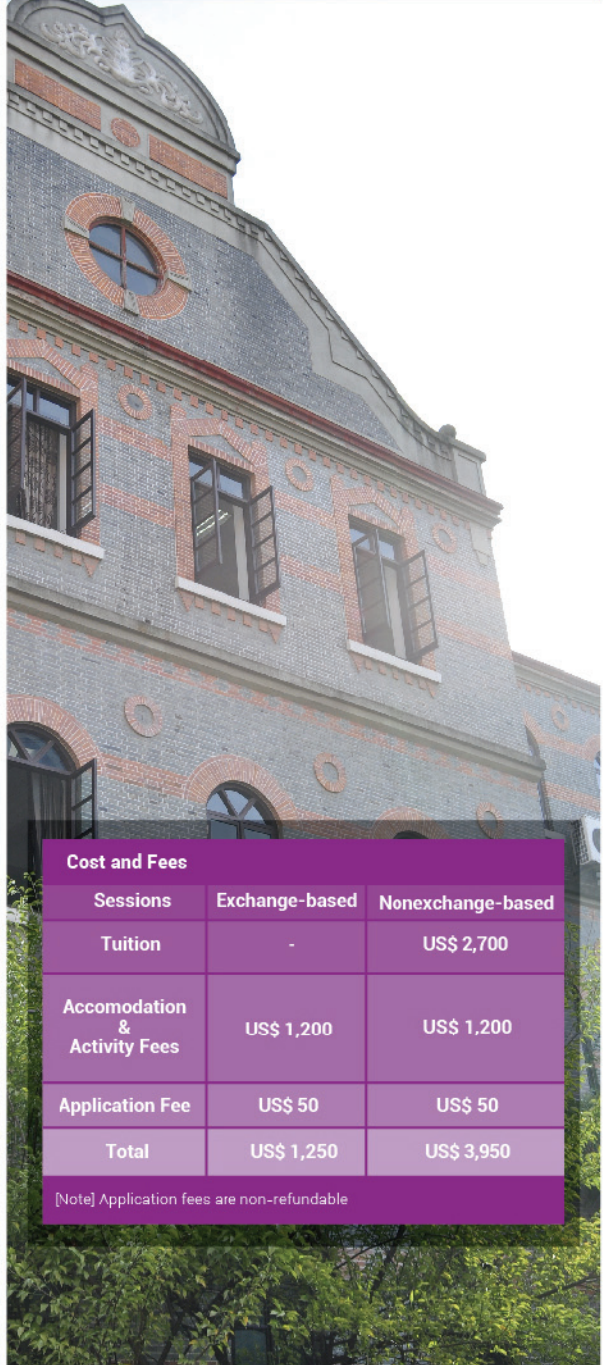
The 2013 application form can be found exclusively online at [www.summerschool.sjtu.edu.cn](http://www.summerschool.sjtu.edu.cn) starting November 1, 2012. Rolling admissions begin in November 2012. There is an application fee of US\$ 50.



### Application Deadline

Rolling Admissions; spaces are limited. Applicants are strongly encouraged to submit all materials as early as possible. The final application deadline is May 15, 2013. If you wish to receive further information about the Antai Global Summer School 2013 and the application form, please visit our website:

[www.summerschool.sjtu.edu.cn](http://www.summerschool.sjtu.edu.cn)



### Cost and Fees

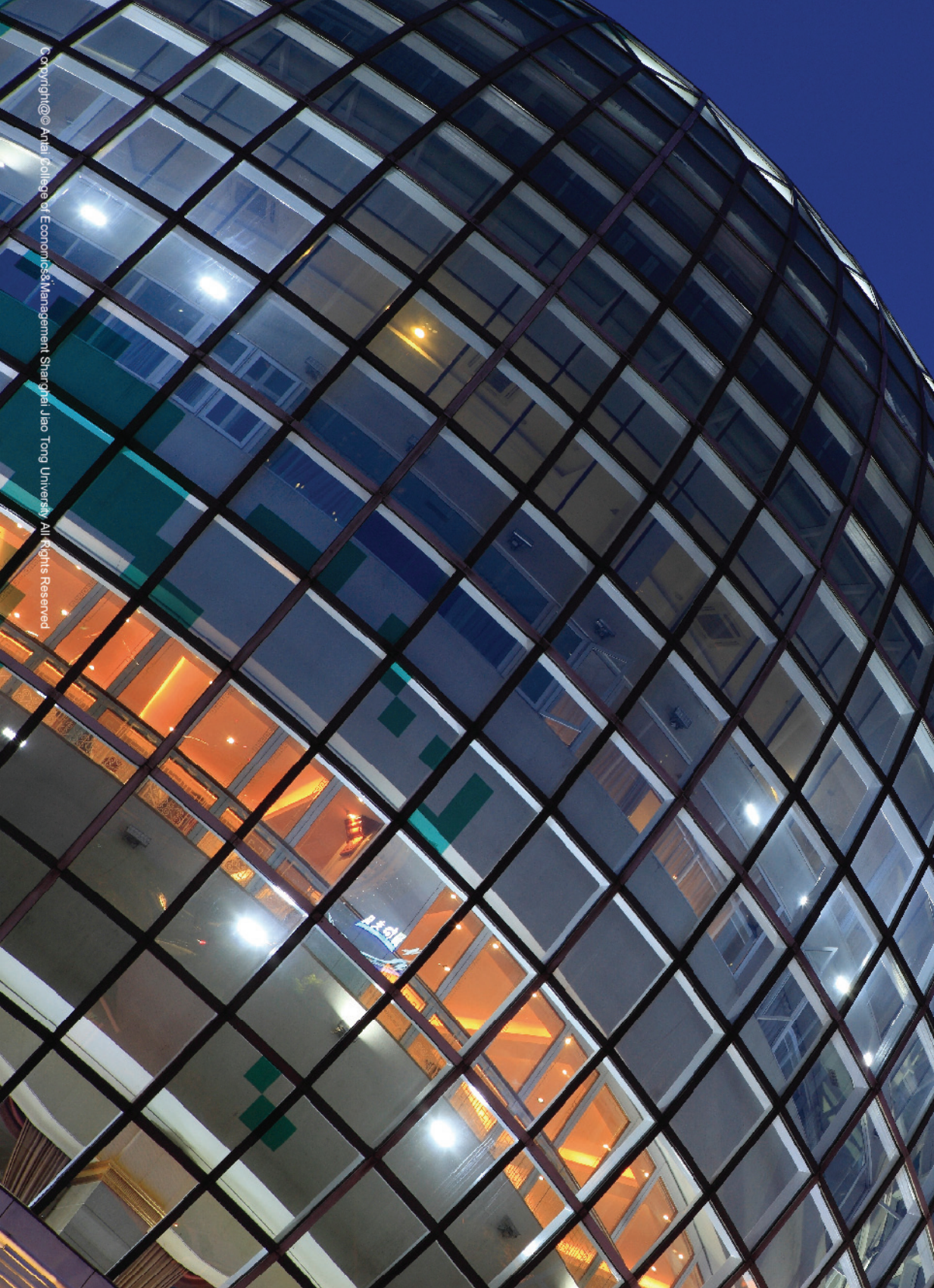
Sessions	Exchange-based	Nonexchange-based
Tuition	-	US\$ 2,700
Accommodation & Activity Fees	US\$ 1,200	US\$ 1,200
Application Fee	US\$ 50	US\$ 50
Total	US\$ 1,250	US\$ 3,950

[Note] Application fees are non-refundable

### WANT TO KNOW MORE? CONTACT

International Cooperation and Exchange Office  
ICEO@sjtu.edu.cn Tel. +86 21 52302510

[www.summerschool.sjtu.edu.cn](http://www.summerschool.sjtu.edu.cn)



Copyright© Anhui College of Economics&Management Shanghai Jiao Tong University All Rights Reserved

**Contact : International Cooperation and Exchange Office**

Tel: +86-21-52302510 Fax: +86-21-52302511

Email: [ICEO@sjtu.edu.cn](mailto:ICEO@sjtu.edu.cn)

Address: 535, Fahua Zhen Road, Shanghai 200052, China

[www.summerschool.sjtu.edu.cn](http://www.summerschool.sjtu.edu.cn)